

BULK AND STERILE SUPPLIES



CONTENTS

- Definition
- Aim
- Functions and Activities
- Advantages
- Planning of CSSD
- Rule of Thumb
- Layout Design Principle
- Structural Designing
- Equipment
- Staffing
- Sterilization
- Flow Pattern
- Quality Control
- Management Process

Definition

“as that service, with in the hospital, catering for the sterile supplies to all departments , both to specialized units as well as general wards and OPDs.”

AIM

- Centralizing the activities of receipt, cleaning, assembly, sterilization, storage and distribution of sterilized materials from a central department where safe sterilization is done under controlled conditions with adequate managerial and technical supervision at an optimum cost.
- To provide an efficient, economic, continuous and quality supply of sterilized material to various areas of the hospital to deliver quality and infection free patient care.
- Contributes to reduction in hospital infection rate
- To reduce the burden of work of the nursing personnel, there by enabling them to devote more of their time to patient care .

FUNCTIONS & ACTIVITIES

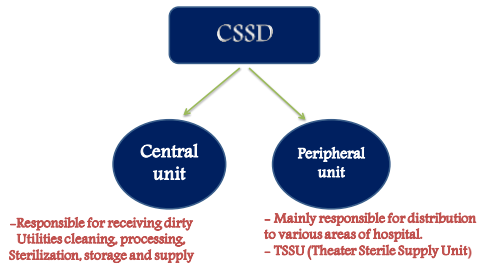


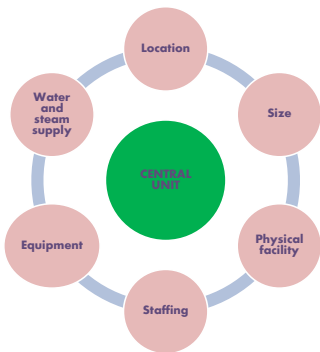
Advantages



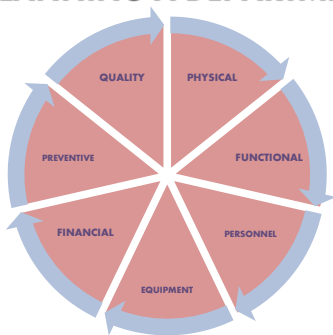
PLANNING OF CSSD

The CSSD can broadly be classified into two parts





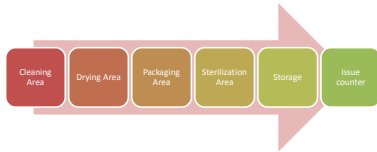
PLANNING A DEPARTMENT



LAY OUT DESIGNING PRINCIPLE

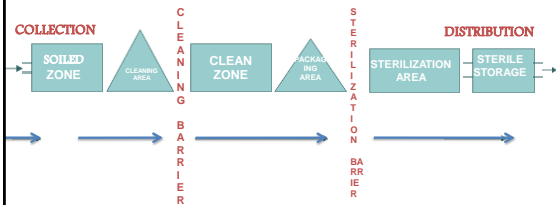
- There is no back tracking of sterile goods.
- One way movement from receiving counter to issue counter.
- Sterile area should be prior to sterile storage and issue.
- The receiving counter must be away from the issue counter.
- Separate receiving and issuing counter

There should minimum six basic division in CSSD



STRUCTURAL DESIGNING

- The Central Unit comprises of three zones, separated by two distinct barriers.
- ✓ One collection window
- ✓ one supply window on the other end.



EQUIPMENT

CLEANING AREA

- High capacity pass through washer disinfector at 80°C to 90° C having various shapes and sizes.
- Cold and hot water streams.
- Detergent Solution.
- Steam when available.
- Hot air ovens for drying instruments.
- Wall fixtures for drying.



STERILIZATION AREA

- Autoclaves using dry heat, moist heat.
- Ethylene oxide sterilizers.
- Testing material to check effectiveness of sterilization.



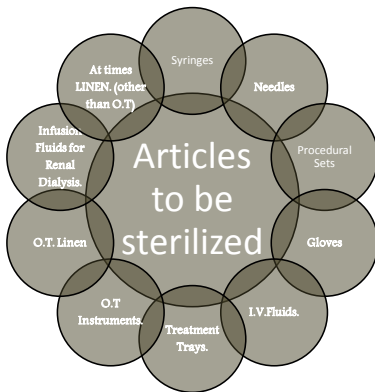
STORAGE AND DISTRIBUTION

- Cup boards, selves, tables, chairs, racks.
- Trolleys, instrument trays, wire baskets and containers.



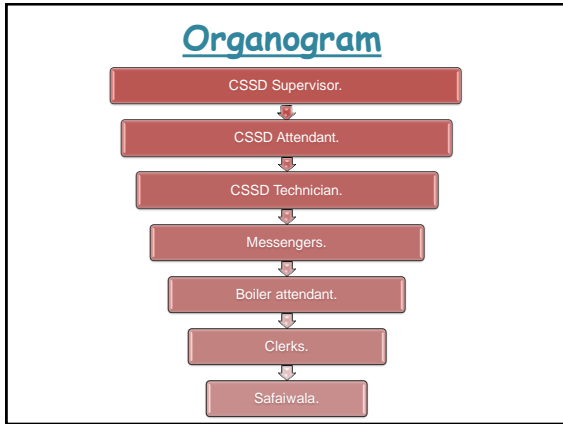
OTHER EQUIPMENT

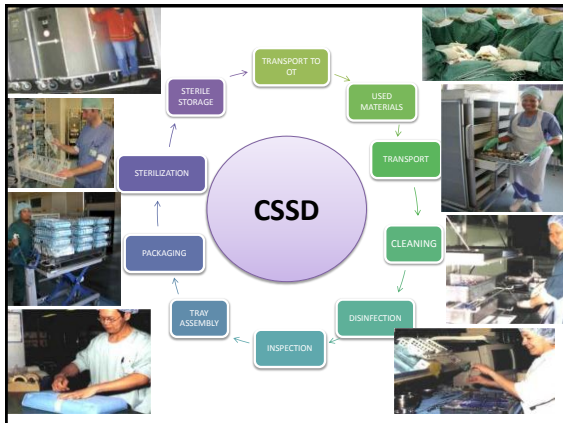
- Cleaning and decontamination devices
- Hot air Oven for drying & heat sterilization
- Glove processing unit for surgical gloves
- Instrument sharper e.g.. Needle sharper
- Testing apparatus for emergency sterilization
- Others -- trolleys, work surface, telephones
- Maintenance and repair of equipments
- Material , chemicals for washing and cleaning
- Steam Boiler



STAFFING

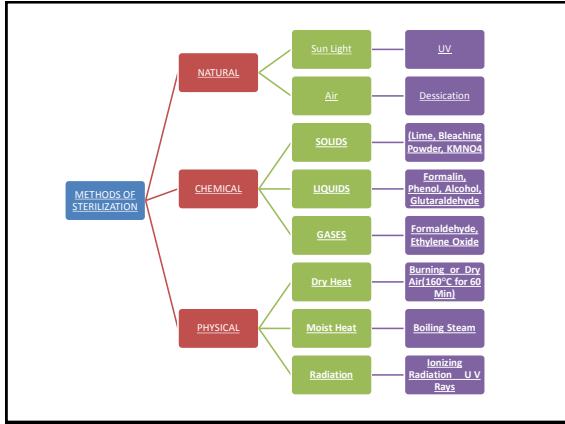
- ❖ Staffing should be planned based on following factors:-
1. Three shift working
 2. Messenger service
 3. Maintenance service.
 4. Staff for 6 areas.
 5. Leave and off duty
- Average 02 technicians for 100 beds and one technical supervisors.
 - One clerk for keeping records, accounting and supply/ shift.
 - Average 04 attendants per 100 beds in all shifts.
 - Adequate number of cleaning attendants and transporters.
 - One technician and two attendants should be stationed at each zone.

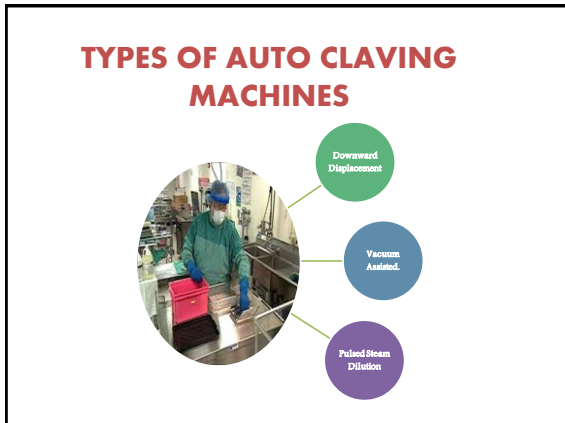




STERILIZATION .

- ❖ It is a process of freeing an article from all living organisms including bacteria ,fungal spores and viruses.
- ❖ A material is pronounced sterile if it achieves 99.99% kill of bacterial spores.





QUALITY CONTROL

1. Indicator tapes

- Time, temperature, pressure sensitive tapes.
- Does not indicate for sensitivity for sterilization but only suggest the required time and pressure the items have been subjected

2. Bacteriological indicator :

- Kept in center of pack before the process and later on subjected to lab for colony count and growth
- A pack of non- pathogenic bacterial spore (stearo- thermopiles) is placed in each load to check quality.
- If the level of sterilization is satisfactory, the green/ brown color change to black.

3. Personnel should be adequately trained to handle the equipments.

4. Regular maintenance of equipments be done.

5. The hospital infection control committee monitors the sterilization by drawing samples and growing in medias for colony count.

STORAGE

- After sterilization the sterilized items are kept in different racks as per labeling.
- Supplied as per the demand of different area.
- To ensure continuous availability of sterile supply five times of daily requirement should be available in storage.

MANAGEMENT PROCESS



THANK YOU !!
